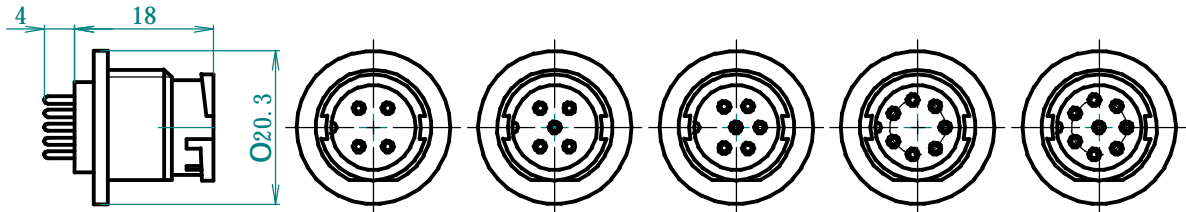


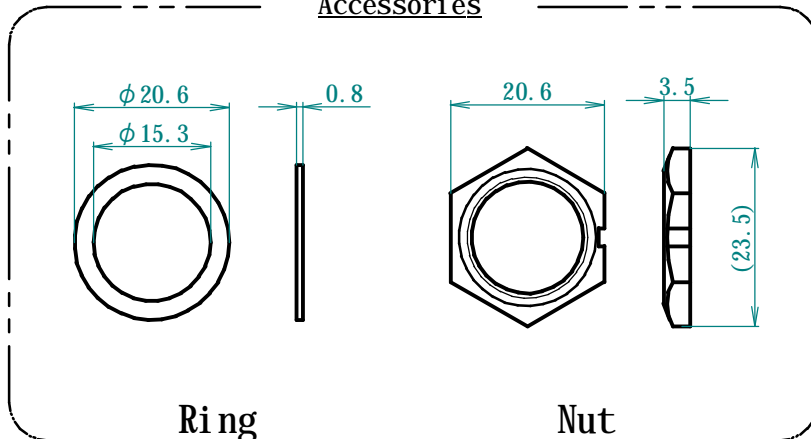
LTW-□MS-C



LTW-□MP-C

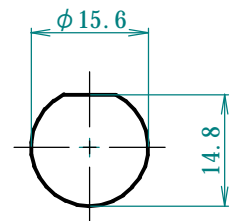
Pin Numbers	4P	5P	6P	7P	8P
Pin Configurations					
Solder Type	LTW-4MS-C	LTW-5MS-C	LTW-6MS-C	LTW-7MS-C	LTW-8MS-C
PBC Type	LTW-4MP-C	LTW-5MP-C	LTW-6MP-C	LTW-7MP-C	LTW-8MP-C
PCB Layouts					

Accessories



Ring

Nut



Mounting Hole  
Panel thickness Max4.0

Waterproof Connector  
LTW-□MS-C/LTW-□MP-C  
Dimensions